

# Panasonic®

**Building Passion,  
Building Solutions.**  
Panasonic Air Conditioning Systems

We face a time in which "quality air" differentiates business. It's a time for Panasonic to fully display its strengths. Our ability to assemble and build superior systems isn't just due to the rich resources we have as a comprehensive electronics manufacturer, but also to Panasonic's 100 years of tradition, where each person thinks and acts on their own initiative while working in a team to reach further heights. We do not compromise. Each of our independent selves is a one stop solution. We face our customers' challenges together with our customers and do all that we can to build effective systems. As a true partner for our customers, we strive to always be at the forefront of business.

- Please read the Installation Instructions carefully before installing the unit, and the Operating Instructions before using it.
- Specifications are subject to change without prior notice.
- The contents of this catalogue are accurate as of Feb 2021.
- Due to printing considerations, actual colours may vary slightly from those shown.
- All graphics are provided solely for the purpose of illustrating a point.



Do not add or replace refrigerant other than the specified type. Manufacturer is not responsible for damage or deterioration in safety due to usage of other refrigerant.

Authorised Dealer

OCAU\_R32 PAC Duct\_CAT\_2020\_V3

**Panasonic Australia Pty. Limited.**

Address: 1 Innovation Road, Macquarie Park, NSW 2113  
ACN 001 592 187 ABN 83 001 592 187

aircon.panasonic.com.au

## RESIDENTIAL PREMIUM INVERTER DUCTED AIR CONDITIONING 2020 / 2021



nanoe™X

**R32**  
REFRIGERANT



**A Better Life, A Better World**

QUALITY AIR FOR LIFE

# Panasonic Air Conditioning 24-hour nanoe™ X Air Purification\*1



Source: <https://www.businessinsider.com/coronavirus-lifespan-on-surfaces-graphic-2020-3>  
\*1 The nanoe™ X mode can be run independently from cooling or heating mode, and needs to be on for the 24 hour air purification to function.



**CONEX**  
(CZ-RTC6BLW)

## NX Series

nanoe™ X is installed across the NX series, which also features stylish new Bluetooth and WLAN-equipped CONEX remote controllers. CONEX (CZ-RTC6BLW) lets you switch nanoe™ X off and on no matter where you are, giving you 24 hr access to clean air in your room.

## Product Line-Up

Cooling Capacity	6.0kW	7.1kW	10.0kW	12.5kW	14.0kW	16.0kW	18.0kW	20.0kW	22.4kW
<b>R32</b> REFRIGERANT									
<b>R32</b> <b>Deluxe</b> <b>Model</b>			 U-100PZH3R8*2	 U-125PZH3R8*2	 U-140PZH3R8*2	 U-160PZH2R8*2*3			
<b>R32</b> REFRIGERANT									
<b>R32</b> <b>Compact</b> <b>Model</b>			 U-100PZ3R8*2	 U-125PZ3R8*2	 U-140PZ3R8*2				

\*2 3-Phase model. \*3 These models are not NX Series and do not have NX features.



# Live Better with 24-hour nanoe™ X Air Purification\*

While the general filters in air purifiers are effective against airborne bacteria and viruses, nanoe™ X also works to inhibit longer-living, adhered bacteria and viruses. As well as this, the CONEX remote control (CZ-RTC6BLW) gives you access to your air conditioner anywhere, anytime, so you can turn nanoe™ X on even while you're out and enjoy 24-hour quality air in your home.

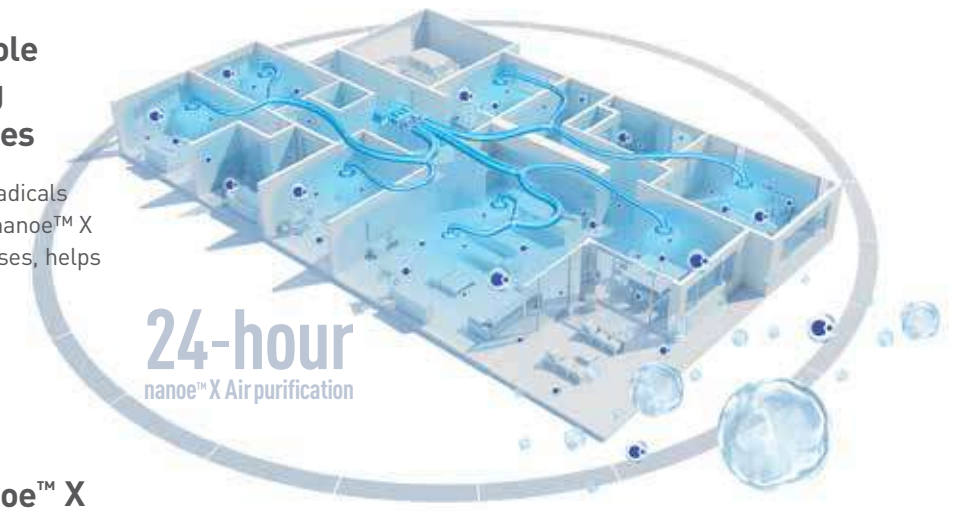
\* The nanoe™ X mode can be run independently from cooling or heating mode, and needs to be on for the 24 hour air purification to function.



## Healthy Air for a Healthy Home with nanoe™ X

### Cleaning Your Whole Home by Inhibiting Bacteria and Viruses

Up to 9.6 trillion hydroxyl radicals are releasing per second, nanoe™ X inhibiting bacteria and viruses, helps keeping your home clean.

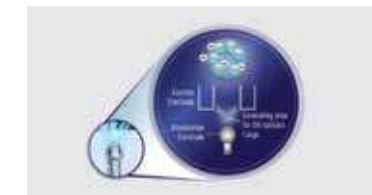


### Uniqueness of nanoe™ X



Effective on fabrics and surfaces

\*Nano-sized (5-20nm) nanoe™ X can penetrate cloth fibres to inhibit adhered pollutants.



Maintenance-free

\*The nanoe™ X device requires no maintenance as its atomisation electrode is enveloped with water during its generation process and it is made of Titanium.



Actively fill in the room

\*Hydroxyl radicals contained in water actively fill an entire room and go beyond the filter to inhibit adhered and airborne viruses.

## Comfort Cloud App Control with CONEX\*

### 24hr nanoe™ X Air Purification App Control

CONEX (CZ-RTC6BLW) comes with WLAN allowing you to control and monitor your air conditioner anytime, anywhere via the Comfort Cloud App. Now you can turn on nanoe™ X even when you are at out, so you can come home to clean air in your house.

\*CZ-RTC6BLW



Switch on and purify when you are out

Cool and purify when you are at home



### The Key Technologies

Thanks to the groundbreaking combination of Panasonic's unique nanoe™ X air cleaning technology and the IoT-enabled CONEX remote control (CZ-RTC6BLW), you can now have control of clean, clear air whenever you need it.



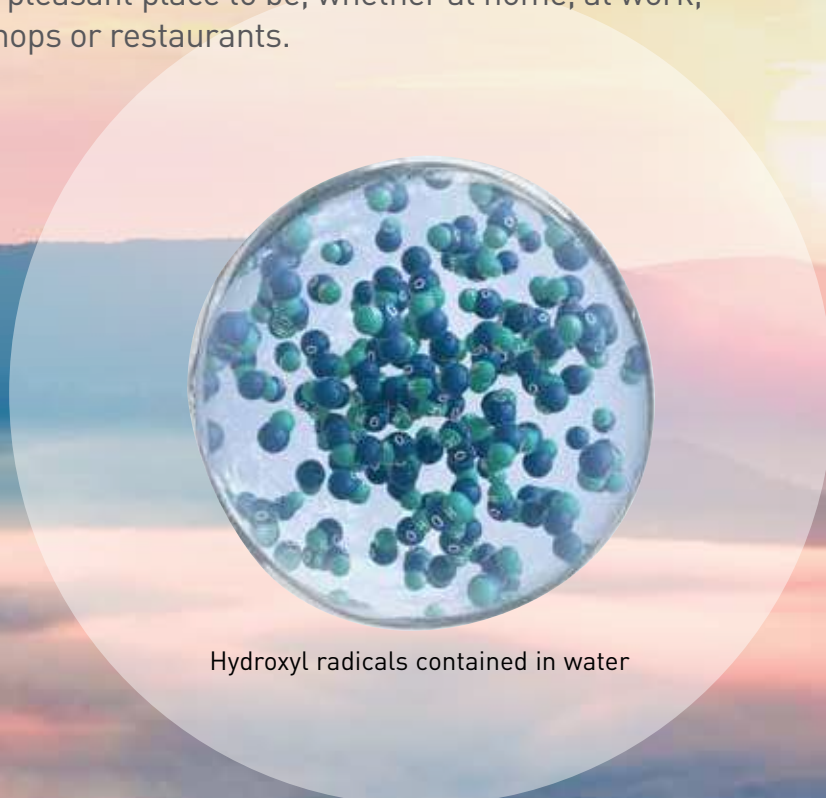


# Bringing Nature's Balance Indoors

## nanoe™ X Technology with The Benefits of Hydroxyl Radicals

### The Well-Being Benefits of Nature Are Well Known-But Do You Know The Power of Hydroxyl Radicals?

Abundant in nature, hydroxyl radicals (also known as OH radicals) inhibit pollutants, viruses, and bacteria to clean and deodorise. nanoe™ X technology can bring these incredible benefits indoors so that hard surfaces, soft furnishings, and the indoor environment can be a cleaner and pleasant place to be, whether at home, at work, visiting hotels, shops or restaurants.

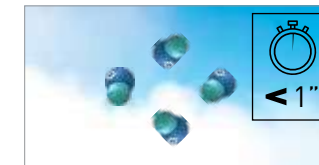


Hydroxyl radicals contained in water

### nanoe™ X Technology with The Benefits of Hydroxyl Radicals

#### Panasonic's nanoe™ X Technology Takes a Step Further and Brings Nature's Detergent - Hydroxyl Radicals - Indoors to Help Create an Ideal Environment.

By creating hydroxyl radicals contained in water, nanoe™ X technology significantly boosts their effectiveness, increasing hydroxyl radicals lifetime from less than a second in nature, to more than 600 seconds – 10 minutes.



Hydroxyl radicals in nature

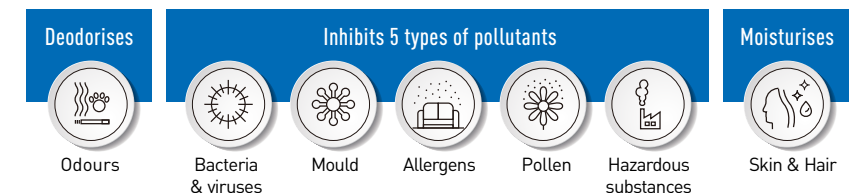


Hydroxyl radicals contained in water - nanoe™ X

Source: <https://www.panasonic.com/global/consumer/clean/hydroxyl/technology.html>

### Effectiveness of nanoe™ X

nanoe™ X deodorises, inhibits bacteria & viruses, mould, allergens, pollen and hazardous substances, as well as moisturising the whole room for smoother skin and hair.

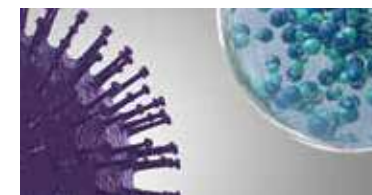


For further details and validation data, please refer to the following website: [https://aircon.panasonic.com/introducing/whats\\_nanoe/nanoeX.html](https://aircon.panasonic.com/introducing/whats_nanoe/nanoeX.html)



### How to Inhibit Pollutants

Thanks to The nanoe™ X Properties, Several Types of Pollutants can be Inhibited.



nanoe™ X reliably reaches pollutants.



Hydroxyl radicals transform pollutants' proteins.



Pollutants activity is inhibited.

### Sensitive Choice (National Asthma Council Australia) Approved

Sensitive Choice is a community service program that aims to educate people on the importance of managing asthma and allergies. Developed by the National Asthma Council Australia in 2006, the program also encourages companies to produce products and services that are more asthma and allergy aware. Panasonic and Sensitive Choice have partnered to introduce nanoe™ X to the Australian market.



### A Naturally Occurring Process

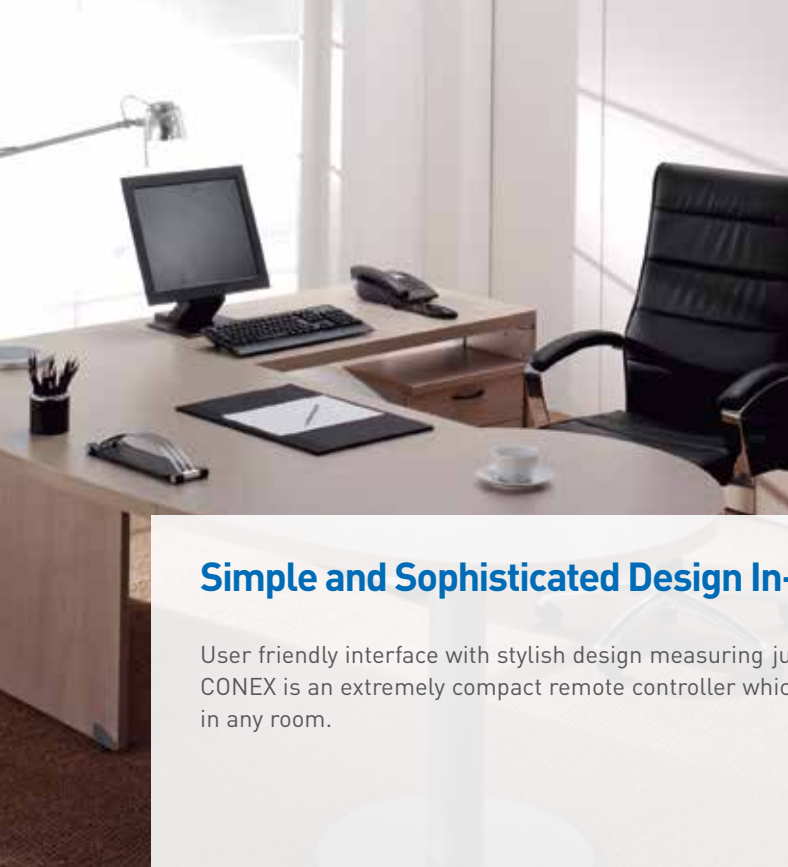
Hydroxyl radicals are unstable molecules looking to react with other elements such as hydrogen molecules of pollutants. Thanks to this reaction, hydroxyl radicals inhibit the growth of pollutants such as viruses, bacteria, moulds, and odours, breaking them down and neutralising unpleasant effects. This naturally occurring process has major benefits to improve indoor air quality.





# Smart Comfort with CONEX

CONEX goes beyond simple remote control to combine sophistication with simplicity, offering IoT integration that connects directly to a variety of apps for next-generation solutions.



## Simple and Sophisticated Design In-and-Out

User friendly interface with stylish design measuring just 86 x 86 mm, CONEX is an extremely compact remote controller which looks great in any room.



**CONEX**  
(CZ-RTC6BL / CZ-RTC6BLW)

## Intuitive User Interface and Convenient Centralised Solutions via WLAN

CONEX(CZ-RTC6BLW) & Comfort Cloud makes managing multiple air conditioning units from just one mobile device easy. Enjoy the convenience of operating your air conditioners using\*1 Smart Voice Control anytime, anywhere.



### Compatible device and browsers

1. IOS 9.0 or above
2. Android 4.4 or above



\*1 Additional accessories and devices are required.  
\*2 To use Amazon Alexa to control your air conditioner, you will need an Amazon Echo device. Amazon, Alexa and all related logos are trademarks of Amazon.com, Inc. or its affiliates.  
To use Google Assistant to control your air conditioner, you will need a Google Assistant device. Google and Google Play are trademarks of Google LLC.

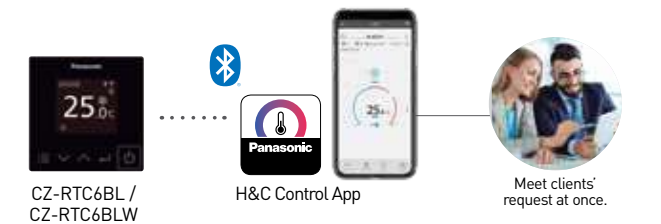


Turn on nanoE™ X by Comfort Cloud

nanoE™ X technology help to keep your living spaces fresh and clean

## True Comfort for End User, Installer and Service Partner Via Bluetooth®

**H&C Control App** makes scheduling setting and complex initial set-up easy and respond swiftly to clients' requests. It's now simpler than ever for clients to further customize settings to meet their needs and perform day-to-day operations.



CZ-RTC6BL / CZ-RTC6BLW

H&C Control App

Meet clients' request at once.

## New wired RC & Monitor adaptor & App compatibility

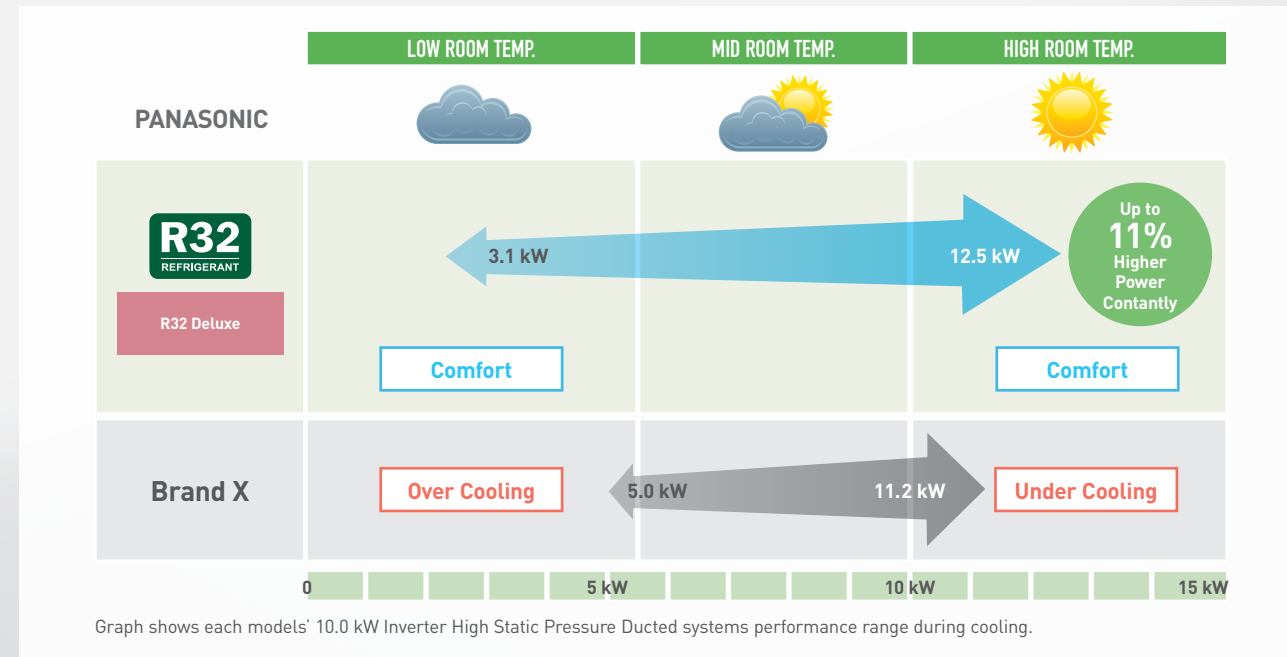
		Wired RC BLUETOOTH	Wired RC BLUETOOTH & WLAN	WLAN adaptor
		CZ-RTC6BL Bluetooth	CZ-RTC6BLW Bluetooth	CZ-CAPWFC1
PZH2 / PZ2 series			×	
NX series	PZH3 / PZ3 Series ODU × NX series IDU			
	PZH2 / PZ2 series ODU × NX series IDU			



# Why Choose Panasonic?

## Constant Comfort Air Conditioning

Another advantage of Panasonic Premium Inverter technology includes its ability to ensure precise temperature control and offer a wider power output range to perform in even the most extreme conditions in Australia, ensuring constant comfort.



## All Side Discharge R32 Outdoor Units

Panasonic's new range of outdoor units feature intuitive technology and thoughtful engineering. The two innovative ranges of R32 units, both Deluxe and Compact, feature energy and space saving technologies, allowing installation in even the tightest and demanding conditions.



## Class Leading Features



### Energy Saving Technologies

Panasonic's Premium Inverter technology creates a powerhouse energy-saving ducted air conditioning system with the ability to lower both cooling capacity and power consumption when required. Panasonic's clever technologies benefit both the environment and your power bill, so your green intention won't prevent you from living a comfortable life.



### Designed for The Australian Environment

Our Premium Inverter ducted systems boast an outstanding operating temperature range. Cooling operation is possible even when it is a scorching up to 48°C outside, which is perfect for Australia's hot summer days and the heating operation is designed to operate even when it's a freezing -20°C outside, so even the coldest parts of Australia are covered.



### Superior Technology Makes Superior Systems

- Demand Response Enabling Device (DRED) ready
- Panasonic Premium Inverter technology
- DC indoor fan motor\*
- Incredibly quiet operation
- Compact indoor and outdoor design
- Easy interfacing for remote On/Off, control outputs, and third party control.

\* Excludes 14.0kW and 16.0kW.

Note: In case of R32 Deluxe Models up to 14.0kW. Please refer to Technical Data Capacity Table for full details.



### Quiet Operation

Panasonic Premium Inverter ducted systems are amongst the quietest in the world, so you can enjoy the comfort of running your air conditioner at night and still have a relaxing sleep. The outdoor unit is also very quiet which means you don't have to worry about keeping your neighbours up either.



### Cold Drafts Reduced During Winter

Cold drafts during start-up are a common unwanted side effect of ducted air conditioning systems. During heating mode Panasonic Premium Inverter ducted air conditioners employ clever sensor technology that allows airflow to enter the room when it has been warmed. This great feature reduces cold drafts, keeping you comfortable at all times.



### You Can Count on Panasonic

Panasonic air conditioners are manufactured to the highest quality standards to ensure years of reliable comfort. We even back our reliability by offering a full 5 year parts and labour warranty.

# Specifications

## R32 Deluxe Model



nanoe™ X as a standard\*

\*nanoe X Generator Mark 2 (except for 18.0-22.4kW)



### Indoor Unit

Hidden in your ceiling



7.1kW – 10.0kW

S-71PE3R / S-100PE3R



12.5kW – 16.0kW

S-125PE3R / S-140PE3R / S-160PE3R



18.0kW – 22.4kW

S-180PE3R5B / S-200PE3R5B / S-224PE3R5B

### Outdoor Unit

Sits outside your home



7.1kW

U-71PZH3R5



10.0kW – 14.0kW

U-100PZH3R5 / U-100PZH3R8\*<sup>1</sup> / U-125PZH3R5  
U-125PZH3R8\*<sup>1</sup> / U-140PZH3R5 / U-140PZH3R8\*<sup>1</sup>

\*<sup>1</sup> 3-Phase



16.0kW – 22.4kW

U-160PZH2R5 / U-160PZH2R8\*<sup>1</sup>  
U-180PZH2R8\*<sup>1</sup> / U-200PZH2R8\*<sup>1</sup>  
U-224PZH2R8\*<sup>1</sup>

\*<sup>1</sup> 3-Phase

### Optional Controller

Variety of options, easy to use



CZ-RTC6BL / CZ-RTC6BLW  
CONEX High-Spec.

This wired remote controller offer IoT integration that connects directly to a variety of apps.

\*<sup>2</sup> only for CZ-RTC6BLW

\*<sup>3</sup> only for CZ-RTC6BL and CZ-RTC6BLW



Comfort Cloud App\*<sup>2</sup>



Control App\*<sup>3</sup>



CZ-RTC5B  
Deluxe Wired Remote  
Controller

This optional backlit LED large controller can be installed in your bedroom so you can change the temperature during the night without turning on the light.



CZ-RTC4  
Wired Remote Controller

The wall control with its large LCD display gives you full operational access and can be easily customised to suit your unique requirements.



CZ-RWS3 + CZ-RWRC3  
Wireless Remote  
Controller

This wireless remote controller gives you the convenience to operate the unit from anywhere in the room.



PAC Smart  
Connectivity  
SER8150

Fully customisable and Building Management System ready wall controller.



CZ-CAPWFC1  
Network Adaptor

Anywhere, anytime control and monitoring multiple air conditioning units.



Comfort Cloud

Note: CZ-RTC6BL, CZ-RTC6BLW, CZ-RTC5B or selected wireless remote controller is needed to turn on or turn off nanoe™ X, please consult Panasonic for details.  
Product images not to scale.

Capacity		7.1kW	10.0kW	12.5kW	14.0kW	16.0kW	18.0kW	20.0kW	22.4kW			
Model Name	Indoor Unit	S-71PE3R	S-100PE3R	S-100PE3R	S-125PE3R	S-125PE3R	S-140PE3R	S-160PE3R	S-180PE3R5B	S-200PE3R5B	S-224PE3R5B	
	Outdoor Unit	U-71PZH3R5	U-100PZH3R5	U-100PZH3R8	U-125PZH3R5	U-125PZH3R8	U-140PZH3R5	U-160PZH2R5	U-180PZH2R8	U-200PZH2R8	U-224PZH2R8	
Cooling capacity :	kW	7.1 (2.2 - 9.0)	10.0 (3.1 - 12.5)	12.5 (3.1 - 12.5)	14.0 (3.2 - 14.0)	14.0 (3.2 - 14.0)	16.0 (3.3 - 18.0)	16.0 (5.5 - 18.0)	18.0 (5.5 - 20.0)	20.0 (5.5 - 22.4)	22.4 (5.7 - 25.0)	
	BTU/h	24,200 (7,500 - 30,700)	34,100 (10,600 - 42,700)	42,700 (10,900 - 47,800)	47,800 (10,900 - 54,600)	47,800 (10,900 - 54,600)	54,600 (11,300 - 61,400)	54,600 (18,800 - 61,400)	61,400 (18,800 - 68,200)	68,200 (18,800 - 76,400)	76,400 (19,400 - 85,300)	
Heating capacity	kW	8.0 (2.0 - 9.0)	11.2 (3.1 - 14.0)	11.2 (3.1 - 14.0)	14.0 (3.2 - 16.0)	14.0 (3.2 - 16.0)	16.0 (3.3 - 18.0)	16.0 (5.5 - 20.0)	20.0 (5.5 - 22.4)	22.4 (5.0 - 25.0)	25.0 (4.9 - 28.0)	
	BTU/h	27,300 (6,800 - 30,700)	38,200 (10,600 - 47,800)	38,200 (10,600 - 47,800)	47,800 (10,900 - 54,600)	47,800 (10,900 - 54,600)	54,600 (11,300 - 61,400)	54,600 (18,800 - 61,400)	61,400 (18,800 - 68,200)	68,200 (18,800 - 76,400)	85,300 (16,700 - 95,500)	
EER : COP	W/W	3.48 : 3.88	3.79 : 3.78	3.79 : 3.78	3.57 : 3.80	3.57 : 3.80	3.26 : 3.68	3.29 : 3.53	3.20 : 3.75	3.33 : 3.67	3.09 : 3.52	
COP@H2 condition	W/W	2.80	2.77	2.77	2.65	2.72	2.65	2.81	2.70	2.81	2.60	
Total power input	Cooling : Heating	kW	2.04 : 2.06	2.64 : 2.96	2.64 : 2.96	3.50 : 3.68	3.50 : 3.68	4.30 : 4.35	4.86 : 5.10	5.63 : 5.33	6.00 : 6.10	7.24 : 7.10
	Hot Climate	kW	4.68 : 4.82	5.04 : 5.10	5.04 : 5.10	4.92 : 5.17	4.92 : 5.17	4.29 : 4.69	4.21 : 4.61	4.35 : 5.00	4.33 : 4.35	3.99 : 4.53
TCSPF : HSPF	Residential	Average Climate	4.11 : 4.22	4.46 : 4.34	4.46 : 4.34	4.49 : 4.40	4.49 : 4.40	3.92 : 4.07	3.80 : 3.99	3.92 : 4.27	3.96 : 3.87	3.67 : 3.86
		Cold Climate	4.19 : 3.79	4.54 : 3.93	4.54 : 3.93	4.60 : 3.90	4.60 : 3.90	4.03 : 3.62	3.85 : 3.55	4.02 : 3.74	4.03 : 3.43	3.76 : 3.38
	Commercial	Hot Climate	5.15 : 4.85	5.55 : 5.15	5.55 : 5.15	5.36 : 5.23	5.36 : 5.23	4.63 : 4.74	4.53 : 4.63	4.75 : 5.03	4.64 : 4.35	4.27 : 4.65
		Average Climate	5.00 : 4.52	5.47 : 4.73	5.47 : 4.73	5.55 : 4.80	5.55 : 4.80	4.60 : 4.39	4.54 : 4.28	4.77 : 4.62	4.72 : 4.08	4.30 : 4.27
Cold Climate	5.37 : 4.11	5.87 : 4.32	5.87 : 4.32	5.97 : 4.31	5.97 : 4.31	4.91 : 3.96	4.80 : 3.88	4.80 : 3.88	5.11 : 4.12	5.00 : 3.70	4.56 : 3.77	
<b>Indoor Unit</b>												
Power source	Phase/Hz	1 Phase / 50Hz	1 Phase / 50Hz	1 Phase / 50Hz	1 Phase / 50Hz	1 Phase / 50Hz	1 Phase / 50Hz	1 Phase / 50Hz	1 Phase / 50Hz	1 Phase / 50Hz	1 Phase / 50Hz	
	V	230V   240V	230V   240V	230V   240V	230V   240V	230V   240V	230V   240V	230V   240V	230V   240V	230V   240V	230V   240V	
Current (rated)	Cooling : Heating	A	~**	~**	~**	~**	~**	2.41 : 2.41   2.38 : 2.38	2.41 : 2.41   2.38 : 2.38	3.10 : 3.10   3.00 : 3.00	3.30 : 3.30   3.20 : 3.20	4.20 : 4.20   4.10 : 4.10
Dimension	H x W x D	mm	360 X 1,200 X 700	360 X 1,200 X 700	360 X 1,200 X 700	430 X 1,200 X 700	430 X 1,200 X 700	430 X 1,200 X 700	486 X 1,456 X 916	486 X 1,456 X 916	486 X 1,456 X 916	
Net weight	Indoor	kg	36	37	37	41	41	50	85	86	88	
Air volume (H/M/L)	Cooling : Heating	L/s	501 / 434 / 387 : 501 / 434 / 387	688 / 584 / 484 : 688 / 584 / 484	688 / 584 / 484 : 688 / 584 / 484	835 / 718 / 601 : 835 / 718 / 601	835 / 718 / 601 : 835 / 718 / 601	1,002 / 835 / 701 : 1,002 / 835 / 701	1,002 / 835 / 701 : 1,002 / 835 / 701	1,200 / 1,050 / 883 : 1,200 / 1,050 / 883	1,200 / 1,050 / 883 : 1,200 / 1,050 / 883	1,400 / 1,200 / 983 : 1,400 / 1,200 / 983
External static pressure		Pa	100 (10 - 150)	100 (10 - 150)	100 (10 - 150)	100 (10 - 150)	100 (10 - 150)	100 (50 - 150)**	100 (50 - 150)**	60 (60 - 180)	75 (75 - 200)	
Sound pressure level (H/M/L)	Cooling : Heating	dB(A)	45 / 44 / 43 : 45 / 44 / 43	48 / 46 / 44 : 48 / 46 / 44	48 / 46 / 44 : 48 / 46 / 44	49 / 47 / 45 : 49 / 47 / 45	49 / 47 / 45 : 49 / 47 / 45	51 / 49 / 47 : 51 / 49 / 47	51 / 49 / 47 : 51 / 49 / 47	46 / 44 / 41 : 46 / 44 / 41	46 / 44 / 41 : 46 / 44 / 41	47 / 45 / 42 : 47 / 45 / 42
Sound power level (H/M/L)	Cooling : Heating	dB	62 / 61 / 60 : 62 / 61 / 60	70 / 68 / 66 : 70 / 68 / 66	70 / 68 / 66 : 70 / 68 / 66	71 / 69 / 67 : 71 / 69 / 67	71 / 69 / 67 : 71 / 69 / 67	73 / 71 / 69 : 73 / 71 / 69	73 / 71 / 69 : 73 / 71 / 69	78 / 76 / 73 : 78 / 76 / 73	78 / 76 / 73 : 78 / 76 / 73	79 / 77 / 74 : 79 / 77 / 74
Number of fan speeds			3	3	3	3	3	3	3	3	3	
Drain piping		mm	VP-25	VP-25	VP-25	VP-25	VP-25	VP-25	VP-25	VP-25	VP-25	
<b>Outdoor Unit</b>												
Power source	Phase/Hz	1 Phase / 50Hz	1 Phase / 50Hz	3 Phase / 50Hz	1 Phase / 50Hz	3 Phase / 50Hz	1 Phase / 50Hz	3 Phase / 50Hz	3 Phase / 50Hz	3 Phase / 50Hz	3 Phase / 50Hz	
	V	230V   240V	230V   240V	400V   415V	230V   240V	400V   415V	230V   240V	400V   415V	400V   415V	400V   415V	400V   415V	
Current (rated)	Cooling : Heating	A	9.85 : 9.95   9.55 : 9.65	12.8 : 14.3   12.2 : 13.7	4.25 : 4.75   4.15 : 4.60	16.7 : 17.6   16.0 : 16.8	5.60 : 5.90   5.40 : 5.70	6.60 : 6.70   6.35 : 6.45	20.0 : 21.1   19.1 : 20.1	6.95 : 7.30   6.65 : 7.00	8.00 : 7.55   7.70 : 7.25	8.45 : 8.60   8.15 : 8.30
Dimension	H x W x D	mm	996 x 940 x 340	1,416 x 940 x 340	1,416 x 940 x 340	1,416 x 940 x 340	1,416 x 940 x 340	1,500 x 980 x 370	1,500 x 980 x 370	1,500 x 980 x 370	1,500 x 980 x 370	
Net weight		kg	66	99	99	99	117	117	115	128	128	
Air volume	Cooling : Heating	L/s	1,018 : 1,002	1,970 : 1,803	1,970 : 1,803	2,087 : 1,870	2,087 : 1,870	2,154 : 1,937	2,738 : 2,738	2,733 : 2,733	2,667 : 2,667	
Sound pressure level (Silent mode)	Cooling : Heating	dB(A)	48 (46) : 50 (48)	52 (50) : 52 (50)	52 (50) : 52 (50)	53 (51) : 53 (51)	53 (51) : 53 (51)	54 (52) : 54 (52)	58 (56) : 60 (58)	58 (56) : 60 (58)	58 (56) : 62 (60)	
Sound power level (Silent mode)	Cooling : Heating	dB	64 (62) : 66 (64)	68 (66) : 68 (66)	68 (66) : 68 (66)	69 (67) : 69 (67)	69 (67) : 69 (67)	70 (68) : 70 (68)	76 (74) : 78 (76)	76 (74) : 78 (76)	77 (75) : 81 (79)	
Piping connections	Liquid / Gas	mm	Ø9.52 / Ø15.88	Ø9.52 / Ø15.88	Ø9.52 / Ø15.88	Ø9.52 / Ø15.88	Ø9.52 / Ø15.88	Ø9.52 / Ø15.88	Ø9.52 / Ø19.05	Ø9.52 / Ø19.05	Ø12.70 / Ø19.05**	
Pipe length range	min. - max.	m	5 - 50	5 - 85	5 - 85	5 - 85	5 - 85	5 - 75	5 - 75	5 - 60		
Elevation difference (OU located lower, OU located higher)		m	15, 30	15, 30	15, 30	15, 30	15, 30	15, 30	30, 30	30, 30		
Maximum chargeless length		m	30	30	30	30	30	30	30	30		
Refrigerant at shipping / Additional gas amount		g	R32 1,950 / 45 (g/m)	R32 3,050 / 45 (g/m)	R32 3,050 / 45 (g/m)	R32 3,050 / 45 (g/m)	R32 3,050 / 45 (g/m)	R32 3,200 / 45 (g/m)	R32 3,200 / 45 (g/m)	R32 3,400 / 45 (g/m)		
Operating range	Cooling : Heating	°C	-15 to 48 : -20 to 24	-15 to 48 : -20 to 24	-15 to 48 : -20 to 24	-15 to 48 : -20 to 24	-15 to 48 : -20 to 24	-15 to 48 : -20 to 24	-15 to 46 : -20 to 24	-15 to 46 : -20 to 24		

Notes:  
 • In the case of nanoe X Off • In case it is necessary to indicate the air flow volume in (L/s), the value in (m³/min.) shall be multiplied by 16.7 and rounded down the decimal point.  
 • AER and ACDP classification is at 230V(400V) only in accordance with GEMS2019. • TCSPF, HSPF and Total Energy consumption indicate the value of average temperature zone.  
 • Indoor and outdoor sound levels are determined in an anechoic chamber and may differ once the unit is installed due to ambient conditions  
 \*\* Outdoor power supply. \*\* Not adjustable, refer to "Indoor Fan Performance" section of technical data.  
 \*\* Tubing size may differ depending on pipe length. Please refer to technical documents. \*\* Additional gas amount is 45g/m when the piping length is under 50m and 60g/m when the piping length is over 50m.



# Specifications

## R32 Compact Model



**nanoe™ X**  
nanoe™ X as a standard\*  
\*nanoe X Generator Mark 2



### Indoor Unit

Hidden in your ceiling



6.0kW  
S-60PE3R



7.1kW - 10.0kW  
S-71PE3R / S-100PE3R



12.5kW - 14.0kW  
S-125PE3R / S-140PE3R

### Outdoor Unit

Sits outside your home



6.0kW - 7.1kW  
U-60PZ3R5 / U-71PZ3R5



10.0kW - 14.0kW  
U-100PZ3R5 / U-100PZ3R8\* / U-125PZ3R5  
U-125PZ3R8\* / U-140PZ3R5 / U-140PZ3R8\*

\*1 3-Phase

### Optional Controller

Variety of options, easy to use

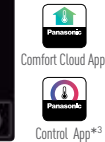


CZ-RTC6BL / CZ-RTC6BLW  
CONEX High-Spec.

This wired remote controller offer IoT integration that connects directly to a variety of apps.

\*\* only for CZ-RTC6BLW

\*\* only for CZ-RTC6BL and CZ-RTC6BLW



Comfort Cloud App\*\*



Control App\*\*



CZ-RTC5B  
Deluxe Wired Remote Controller

This optional backlit LED large controller can be installed in your bed room so you can change the temperature during the night without turning on the light.



CZ-RTC4  
Wired Remote Controller

The wall control with its large LCD display gives you full operational access and can be easily customised to suit your unique requirements.



CZ-RWS3 + CZ-RWRC3  
Wireless Remote Controller

This wireless remote controller gives you the convenience to operate the unit from anywhere in the room.



PAC Smart Connectivity  
SER8150

Fully customisable and Building Management System ready wall controller.



CZ-CAPWFC1  
Network Adaptor

Anywhere, anytime control and monitoring multiple air conditioning units.



Comfort Cloud

Note: CZ-RTC6BL, CZ-RTC6BLW, CZ-RTC5B or selected wireless remote controller is needed to turn on or turn off nanoe™ X, please consult Panasonic for details. Product images not to scale.

Capacity		6.0kW	7.1kW	10.0kW	12.5kW	14.0kW	
Model Name	Indoor Unit	S-60PE3R	S-71PE3R	S-100PE3R	S-100PE3R	S-125PE3R	
	Outdoor Unit	U-60PZ3R5	U-71PZ3R5	U-100PZ3R5	U-100PZ3R8	U-125PZ3R5	
Cooling capacity :	kW	6.0 (2.0 - 7.1)	7.1 (2.6 - 7.7)	10.0 (3.0 - 11.5)	12.5 (3.2 - 13.5)	14.0 (3.3 - 15.0)	
	BTU/h	20,500 (6,800 - 24,200)	24,200 (8,900 - 26,300)	34,100 (10,200 - 39,200)	42,700 (10,900 - 46,100)	47,800 (11,300 - 51,200)	
Heating capacity	kW	6.0 (1.8 - 7.0)	7.1 (2.1 - 8.1)	10.0 (3.0 - 14.0)	12.5 (3.3 - 15.0)	14.0 (3.4 - 16.0)	
	BTU/h	20,500 (6,100 - 23,900)	24,200 (7,200 - 27,600)	34,100 (10,200 - 47,800)	42,700 (11,300 - 51,200)	47,800 (11,600 - 54,600)	
EER : COP	W/W	3.26 - 4.08	3.21 - 4.25	3.58 - 4.08	3.55 - 4.03	3.25 - 3.76	
COP@H2 condition	W/W	3.00	3.11	2.88	2.56	2.68	
Total power input	Cooling : Heating	1.84 : 1.47	2.21 : 1.67	2.79 : 2.45	3.52 : 3.10	4.31 : 3.72	
	Hot Climate	3.98 : 3.95	3.96 : 4.05	4.64 : 3.95	4.60 : 3.93	4.27 : 3.79	
TCSPF : HSPF	Residential	Average Climate	3.56 - 3.88	3.59 - 4.00	4.17 : 3.81	4.16 : 3.79	3.92 : 3.64
		Cold Climate	3.58 - 3.59	3.63 - 3.70	4.23 : 3.55	4.26 : 3.47	4.03 : 3.34
		Hot Climate	4.25 : 3.83	4.22 : 3.91	4.99 : 3.90	4.96 : 3.84	4.56 : 3.70
	Commercial	Average Climate	4.16 : 3.74	4.19 : 3.83	4.98 : 3.80	4.88 : 3.73	4.53 : 3.58
		Cold Climate	4.38 : 3.58	4.41 : 3.67	5.28 : 3.61	5.20 : 3.52	4.81 : 3.40
		Hot Climate					
<b>Indoor Unit</b>							
Power source	Phase/Hz	1 Phase / 50Hz	1 Phase / 50Hz	1 Phase / 50Hz	1 Phase / 50Hz	1 Phase / 50Hz	
	V	230V   240V	230V   240V	230V   240V	230V   240V	230V   240V	
Dimensions	H x W x D	290 x 1,200 x 700	360 x 1,200 x 700	360 x 1,200 x 700	430 x 1,200 x 700	430 x 1,200 x 700	
Net weight	Indoor / Panel	31	36	37	41	50	
Air volume (H/M/L)	Cooling : Heating	367 / 334 / 367 : 367 / 334 / 367	501 / 434 / 367 : 501 / 434 / 367	668 / 584 / 484 : 668 / 584 / 484	835 / 768 / 601 : 835 / 768 / 601	1,002 / 835 / 701 : 1,002 / 835 / 701	
External static pressure	Pa	70 (10 - 150)	100 (10 - 150)	100 (10 - 150)	100 (10 - 150)	100 (50 - 150)**	
Sound pressure level (H/M/L)	Cooling : Heating	43 / 41 / 40 : 43 / 41 / 40	45 / 44 / 43 : 45 / 44 / 43	48 / 46 / 44 : 48 / 46 / 44	49 / 47 / 45 : 49 / 47 / 45	51 / 49 / 47 : 51 / 49 / 47	
Sound power level (H/M/L)	Cooling : Heating	60 / 58 / 57 : 60 / 58 / 57	62 / 61 / 60 : 62 / 61 / 60	70 / 68 / 66 : 70 / 68 / 66	71 / 69 / 67 : 71 / 69 / 67	73 / 71 / 69 : 73 / 71 / 69	
Number of fan speeds		3	3	3	3	3	
Drain piping	mm	VP-25	VP-25	VP-25	VP-25	VP-25	
<b>Outdoor Unit</b>							
Power source	Phase/Hz	1 Phase / 50Hz	1 Phase / 50Hz	1 Phase / 50Hz	3 Phase / 50Hz	3 Phase / 50Hz	
	V	230V   240V	230V   240V	230V   240V	400V   415V	400V   415V	
Current (rated)	Cooling : Heating	8.50 : 6.85   8.15 : 6.60	10.3 : 8.00   9.90 : 7.65	13.9 : 12.4   13.4 : 11.9	17.0 : 15.0   16.3 : 14.4	19.7 : 17.0   18.9 : 16.3	
Dimensions	H x W x D	695 x 875 x 320	695 x 875 x 320	996 x 980 x 370	996 x 980 x 370	996 x 980 x 370	
Net weight		43	50	83	87	87	
Air volume	Cooling : Heating	701 : 701	746 : 766	1,219 : 1,219	1,369 : 1,336	1,402 : 1,369	
Sound pressure level (Silent mode)	Cooling : Heating	48 (46) : 49 (47)	49 (47) : 49 (47)	52 (50) : 52 (50)	55 (53) : 55 (53)	56 (54) : 56 (54)	
Sound power level (Silent mode)	Cooling : Heating	66 (64) : 67 (65)	67 (65) : 67 (65)	70 (68) : 70 (68)	73 (71) : 73 (71)	74 (72) : 74 (72)	
Piping connections	Liquid / Gas	Ø6.35 / Ø12.7**	Ø6.35 / Ø15.88**	Ø9.52 / Ø15.88	Ø9.52 / Ø15.88	Ø9.52 / Ø15.88	
Pipe length range	min. - max.	3 - 40	3 - 40	5 - 50	5 - 50	5 - 50	
Elevation difference (OU located lower, OU located higher)		15, 30	15, 30	15, 30	15, 30	15, 30	
Maximum chargeless length		30	30	30	30	30	
Refrigerant at shipping, Additional gas amount	g	R32 1,130 / 15 (a/m)	R32 1,320 / 17 (a/m)	R32 2,400 / 45 (a/m)	R32 2,800 / 45 (a/m)	R32 2,800 / 45 (a/m)	
Operating range	Cooling : Heating	-10 to 46 : -15 to 24	-10 to 46 : -15 to 24	-10 to 46 : -15 to 24	-10 to 46 : -15 to 24	-10 to 46 : -15 to 24	

Notes:  
 • In the case of nanoe X OFF • In case it is necessary to indicate the air flow volume in [l/s], the value in [m³/min.] shall be multiplied by 16.7 and rounded down the decimal point.  
 • AER and ACOP classification is at 230V(400V) only in accordance with GEMS2019. • TCSPF, HSPF and Total Energy consumption indicate the value of average temperature zone.  
 • Indoor and outdoor sound levels are determined in an anechoic chamber and may differ once the unit is installed due to ambient conditions  
 \*\* Not adjustable, refer to "Indoor Fan Performance" section of technical data.  
 \* For piping connection for 6.0kW unit, connect the gas socket tube (Ø12.7-Ø15.88) to the gas tubing side indoor unit and connect the liquid socket tube (Ø6.35-Ø9.52) to the liquid tubing side indoor unit.  
 \*\* For piping connection for 7.1kW unit, connect the liquid socket tube (Ø6.35-Ø9.52) to the liquid tubing side indoor unit.